



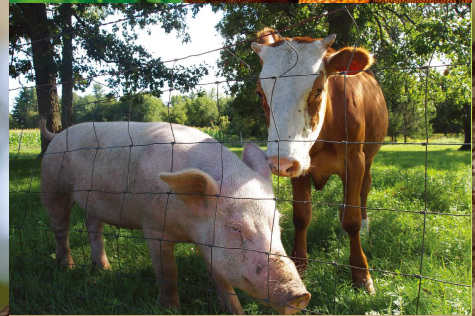
# One Health Forum Korea 2012

One Health Forum 2012 is the first attempt at providing a forum for specialists from around Korea and around the world to come together to introduce the One Health concept in Korea and discuss the tasks that confront us. Twenty professionals will share their experience and vision during six sessions covering: background theory, zoonosis, food safety and sustainability, communication, ecosystem health, and the challenges confronting Korean society.

One Health Forum 2012 is the first of what is planned to be an annual forum hosted jointly by Seoul National University College of Veterinary Medicine, the Korea Centers for Disease Control and Prevention, Animal, the Plant and Fisheries Quarantine and Inspection Agency and the National Institute of Environmental Research. Through that forum, we hope to provide an opportunity for the formation of an international network of specialists to find solutions to current health issues and translate those solutions into policy.

One Health Forum Korea 2012 는 국내외 전문가들을 초청하여 One Health의 개념을 소개하고 당면과제를 토론하는 그 첫번째 시도입니다. 이론적 배경, 인수공통전염병, 식품안전과 지속가능성, 커뮤니케이션과 생태 보건, 한국 사회에서의 과제를 다루는 6개의 세션에서 총 20분의 전문가가 여러분과 경험과 비전을 공유하게 될 것입니다.

이번 포럼을 공동으로 준비하는 서울대학교 수의과대학, 보건복지부 질병관리본부, 농림수산식품부 농림수산검역검사본부, 환경부 국립환경과학원은 향후 매년 포럼을 개최할 계획이며, 현실의 보건문제를 해결하고 이를 정책화 할 수 있도록 노력할 것입니다. One Health Forum Korea 2012가 질병관리, 지속가능한 성장, 보건 인력의 소통과 교육 측면에서 국제 전문가들과의 네트워크를 형성하는 소중한 기회가 되었으면 합니다.



# 사람, 동물, 생태계의 건강은 하나입니다.

One Health Forum Korea는 인간, 동물, 생태계의 건강을 확보하기 위해 모든 관련 조직이 참여하는 열린 네트워크를 추구합니다. 향후 정기적인 포럼과 학술대회, 세미나, 정책 토론회 등을 개최할 예정입니다. 또한, 세계 각국 및 국제기구의 One Health 네트워크와 공조하고 정보를 공유해 나가겠습니다.

**[www.onehealth.kr](http://www.onehealth.kr)**



## One Health Forum Korea 2012 Partners

The Korean Public Health Association (Member Societies : Korean Society for Zoonosis,  
Korean Society of Public Health Nursing, Korean Society For Health Education And Promotion,  
Korean Association of Health and Medical Sociology, The Korean Society of Health Information and Statistics,  
The Korean Society of Veterinary Public Health, The Korean Society of Food Hygiene and Safety, Korean Society of Food Service Sanitation,  
Korean Society of Alcohol Science, Korean Society of Epidemiology, The Korean Society for Lactic Acid Bacteria,  
The Korean Society for School Health Education, Korean Society of Environmental Health]  
The Ecological Society of Korea  
Korean Society of Environment and Ecology  
The Korean Society of Veterinary Science  
Korean Society of Zoo and Wildlife Medicine

## One Health Forum Korea 2012 Committee

College of Veterinary Medicine, Seoul National University  
Bldg. 85 #617, 1 Gwanak-ro, Gwanak-gu, Seoul, 151-742, Korea  
Tel: +82-2-880-1289/1180 Fax: +82-2-875-1289  
e-mail: ohfkorea@gmail.com Homepage: [www.onehealth.kr](http://www.onehealth.kr)

# One Health Forum Korea 2012



December 13-14<sup>th</sup> 2012  
Faculty Club, Seoul National University  
Seoul, Korea



서울대학교 수의과대학



질병관리본부



농림수산물검역검사본부



국립환경과학원





# One Health

With the recent health threats facing the world, it has become clear that a new approach is needed to find the causes behind those threats and solutions to resolve them. Reflecting the demands of our times, One Health it is an international, interdisciplinary approach emphasizing dialogue, network building and continuing education at the convergence of human medicine, veterinary medicine and ecology.

The aim of the One Health concept is the formulation of a whole-of-society approach to health problems, an approach based on an understanding of the interconnections between humans, animals, and the environment.

The One Health approach is premised on achieving a broad view of human, animal, and environmental health, as well as an understanding of regional differences. The realization of this approach requires the development of a system for communication between different specialists as well as between specialists and local society. What is needed more than anything is a forum for systematic, academic cooperation amongst the agents and specialists involved.

최근 세계를 위협하고 있는 다양한 보건 문제들은 그 원인을 규명하고 해결책을 모색하는데 기존과는 다른 새로운 접근을 필요로 하고 있습니다. One Health는 이런 시대적 상황을 반영한 새로운 전략으로 지리적인 경계를 넘고 학문간의 융합과 협력을 도모하며 의사소통과 네트워크 형성, 지속적인 교육을 강조합니다.

우리는 One Health 개념을 통해 보건에 있어 인간, 동물, 환경의 고리를 이해하고 이와 더불어 인간과 동물의 건강, 생태와 환경 보존에 관련한 정책, 경제, 사회, 문화의 전 사회적 측면(a-whole-of-society)을 고려한 해결책을 찾고자 합니다.

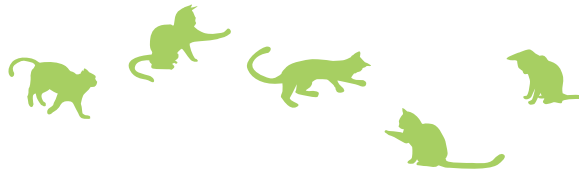
One Health 접근법에서는 인간, 동물, 환경의 건강에 대한 거시적인 안목은 물론 각 지역의 특성을 이해하는 일이 전제되어야 합니다. 또한 전문가와 전문가, 전문가와 지역민 사이의 소통을 도울 수 있는 시스템을 개발해야 합니다. 따라서 무엇보다도 관계기관과 전문가들이 제도적, 학술적으로 협력할 수 있는 소통의 장이 필요합니다.



One Health Forum Korea 2012

# One World, One Health

하나의 세계, 하나의 건강



## Program

**Thursday Dec. 13<sup>th</sup> 2012**

08:30~09:30 | Registration

09:30~10:00 | Opening Ceremony

### I. One Health Approach to Complex Health Problems

10:00~10:30 | "One Health" From theory to policy and practice at international and local level

"One Health" 이론에서 행동과 실천으로 | Jakob Zinsstag Swiss Tropical and Public Health Institute

10:30~11:00 | Zooeyia: An essential component of "One Health"

Zooeyia: One Health의 필수 요소 | Kate Hodgson University of Toronto

11:00~11:20 | Coffee Break

11:20~11:50 | A systemic framework for addressing public health and zoonotic issues using a One Health approach

공중보건과 인수공통감염병의 문제를 논하기 위한 One Health적인 접근법 |

Vanessa Nadine Racloz University of Queensland

11:50~12:20 | History of One Health

One Health의 역사 | Angela Cassidy Imperial College London

12:20~12:50 | Discussion

12:50~14:00 | Lunch

### II. One Health, Disease Surveillance and Control

14:00~14:30 | Zoonoses in Rural Communities in Korea

한국 농촌 지역에서 발생하는 인수공통감염병 | Hyun-Sul Lim Dongkuk University

14:30~15:00 | Climate Change and Human Health

기후변화와 건강 | Jae-Yoen Chang Aju University

15:00~15:20 | Coffee Break

15:20~15:50 | Influenza at the Human-Animal Interface

사람-동물 접점에서 인플루엔자 | Woo-Ju Kim Korea University

15:50~16:20 | Sustainable Animal and Human Health: FMD Case study

지속가능한 가축위생: 구제역 발생사례를 중심으로 | Day Jung Gwangju Agricultural Technical Center

16:20~16:50 | Impacts and Countermeasures of Exotic Animal Diseases

외래동물전염병의 영향과 대책 | Yun Sang Cho Animal, Plant and Fisheries Quarantine and Inspection Agency (QIA)

16:50~17:20 | Discussion

17:30~19:30 | Welcoming Reception

Friday Dec. 14<sup>th</sup> 2012

### III. One Health, Food Production and Sustainability

09:30~10:00 | Global Initiative for Food Systems Leadership: A One Health Approach

GIFSL 식품위생에 대한 One Health적 접근 | Linda Valeri Global Initiative for Food Systems Leadership

10:00~10:30 | Epinomic Strategy in One Health and One World

One Health 및 One World에서 역학·비용·효과에 대한 최적 전략 |

Hachung Yoon Animal, Plant and Fisheries Quarantine and Inspection Agency (QIA)

10:30~11:00 | Center for Animal Health and Food Safety and educational opportunity for One Health

CAHFS와 One Health 교육 | Jeein Chung University of Minnesota

11:00~11:20 | Discussion

11:20~11:40 | Coffee Break

### IV. One Health, Communication

11:40~12:10 | Cross-sector Communication for Improved Health Outcome

보건증진을 위한 다분야 커뮤니케이션 | Shana Cecile Gillette Colorado State University

12:10~12:40 | Better Communication in Risk Situation: The Role of Experts and Media

위기상황에서의 효과적 커뮤니케이션: 전문가 및 미디어의 역할 | Myung Soon You Seoul National University

12:40~13:00 | Discussion

13:00~14:00 | Lunch

### V. One Health, Ecosystem Health

14:00~14:30 | The Well-being of Nation: Eco-welfare and Consilience of Knowledge

국가의 복지-생태복지와 지식의 통섭 | Jae Chun Choe Ewha Women's University

14:30~15:00 | Human-Animal Medicine and Environmental Health

인간-동물의학과 환경의 보건 | Lisa Conti One Health Initiative

15:00~15:20 | Discussion

15:20~15:40 | Coffee Break

### VI. One Health, Future Perspectives and Challenges in Korea

15:40~16:00 | Human-Animal Interface for Disease Prevention

질병 예방을 위한 인간-동물 인터페이스 | Young-Taek Kim Korea Center for Disease Control and Prevention

16:00~16:20 | Global Collaboration in One Health

One Health 측면의 국제 협력 | Yong Joo Kim Animal, Plant and Fisheries Quarantine and Inspection Agency (QIA)

16:20~16:40 | The Human Exposure and Health Effects on Mercury in Some Areas, Korea

일부 지역에서 수은의 인체노출 및 건강영향 | Seung Do Yu National Institute of Environmental Research

16:40~17:00 | Interdisciplinary Education and Training in One Health

One Health를 위한 학제간 교육 및 훈련 | Myung-Sun Chun Seoul National University

17:00~17:30 | Discussion

17:30~18:00 | Closing Ceremony

